

Shearwater Pursuit

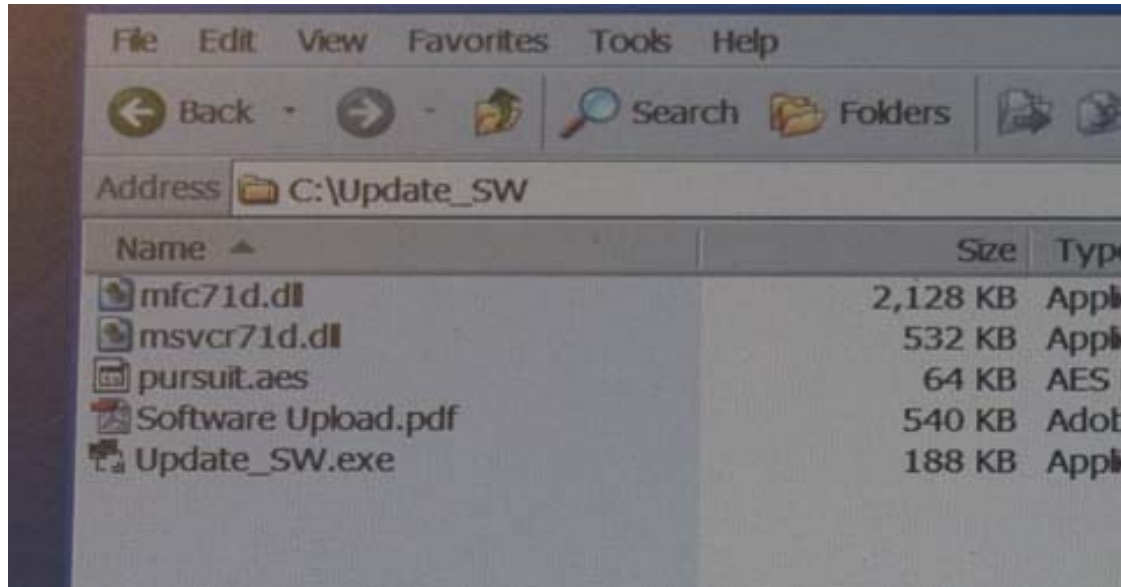
Software Update Instructions

Overview

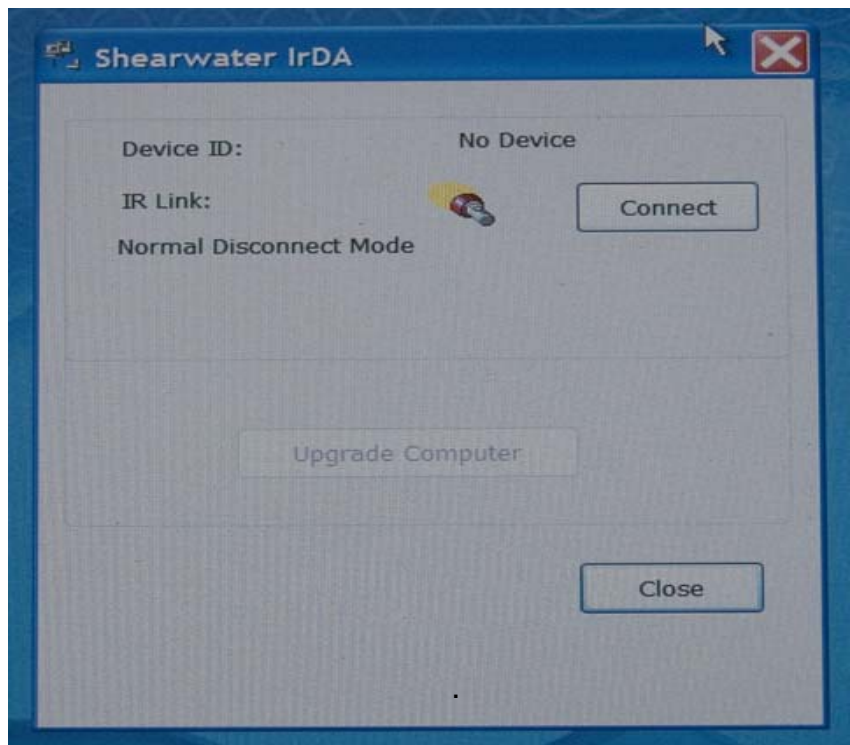
Summary of steps

- Expand the zip file or use
- Expand the contents of the zip file into a directory
- Double-click on Update_SW.exe to run the update program
- Connect to the Pursuit
- Install the IrDA if necessary
- Wait for the Pursuit to receive the update
- Wait for the Pursuit to decrypt the update and restart.

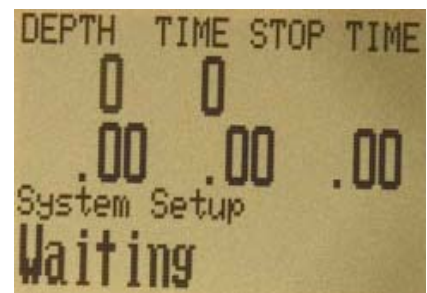
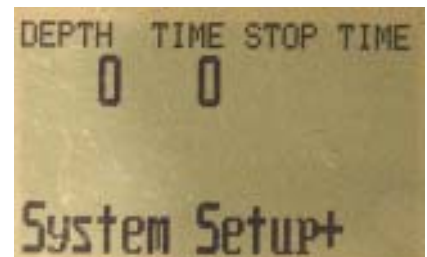
Expand the zip file into a directory.



Double click on Update_SW.exe to start the upload program. It will look like the image on the left.



Put the Pursuit in the Load Upgrade mode.



Put the Pursuit down next to the USB IrDA port about 6 inches away.

On the Pursuit, the IrDA port is in the cut out area on the front.



Or next to the built-in IrDA port if your laptop has one.



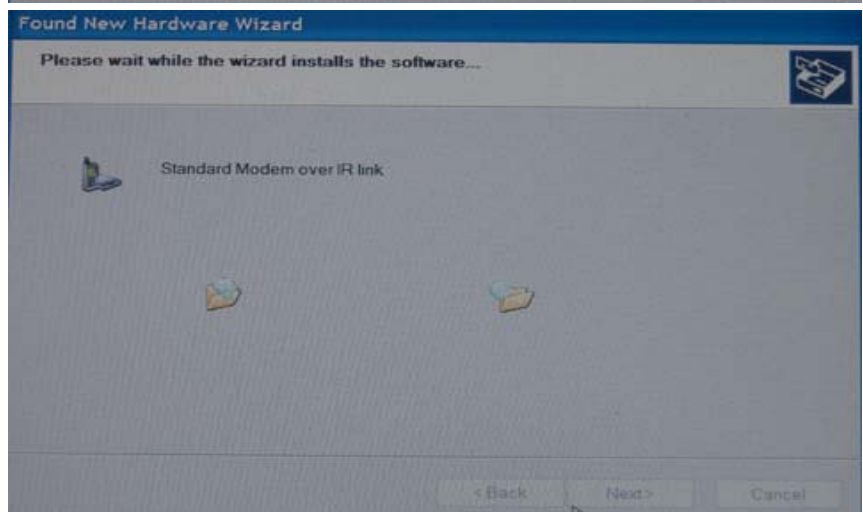
Your screen should show Generic IrDA and Discovery Mode



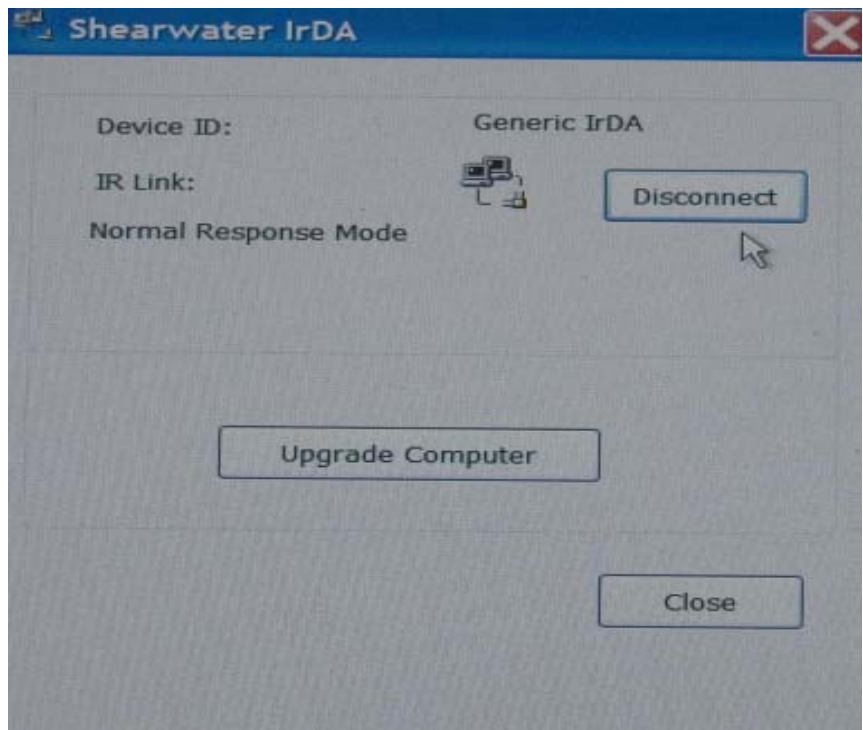
If you see the screen at the left, Windows is installing a driver of the IrDA port.



In that case, wait for it to finish, move the Pursuit away for 5 minutes, then start again.



Click on connect and the Ir Link should show Normal Response Mode.

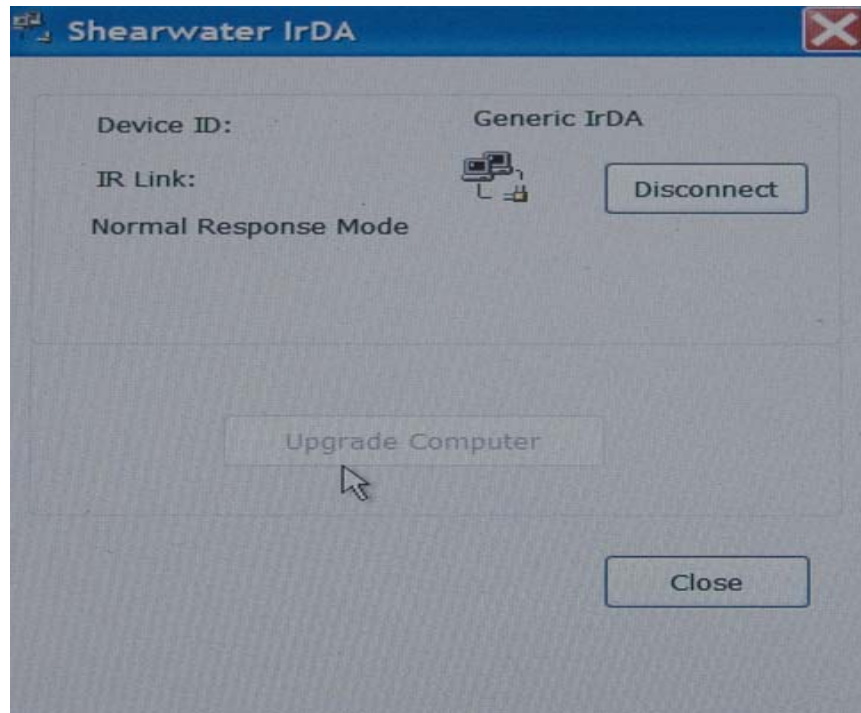


The Pursuit will show Device Found.

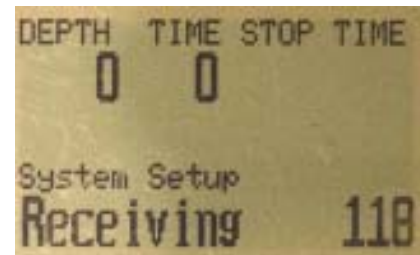


Now click on Upgrade computer on the PC.

The PC display will dim out the Upgrade button and the Pursuit will start receiving.



It will receive more than 200 blocks. At this writing, It's about 255 blocks, but that will change over time.



Once the Pursuit has finished receiving, it will drop the IrDA connection to the PC and it will decrypt the download. This is a compute intensive step that takes about 1/2 hour.



After it finishes decrypting, it will show updating for about 5 seconds then restart itself. That will clear the tissue compartments.

If the Updating display shows for more than a minute, remove the battery for a moment to restart the computer.

There is only a window of a few seconds at the end of the decrypting step where the operating software is actually being updated. If the process download or decrypt fails for some reason, the computer will be left as it was.

After the update you can check the version number to confirm that it is the version you expect. The first upgrade is version E. The version is the last character on the line.



DEPTH	TIME	STOP	TIME
0	0		
00	00	00	
Serial No	Version		
19351200	200000E		